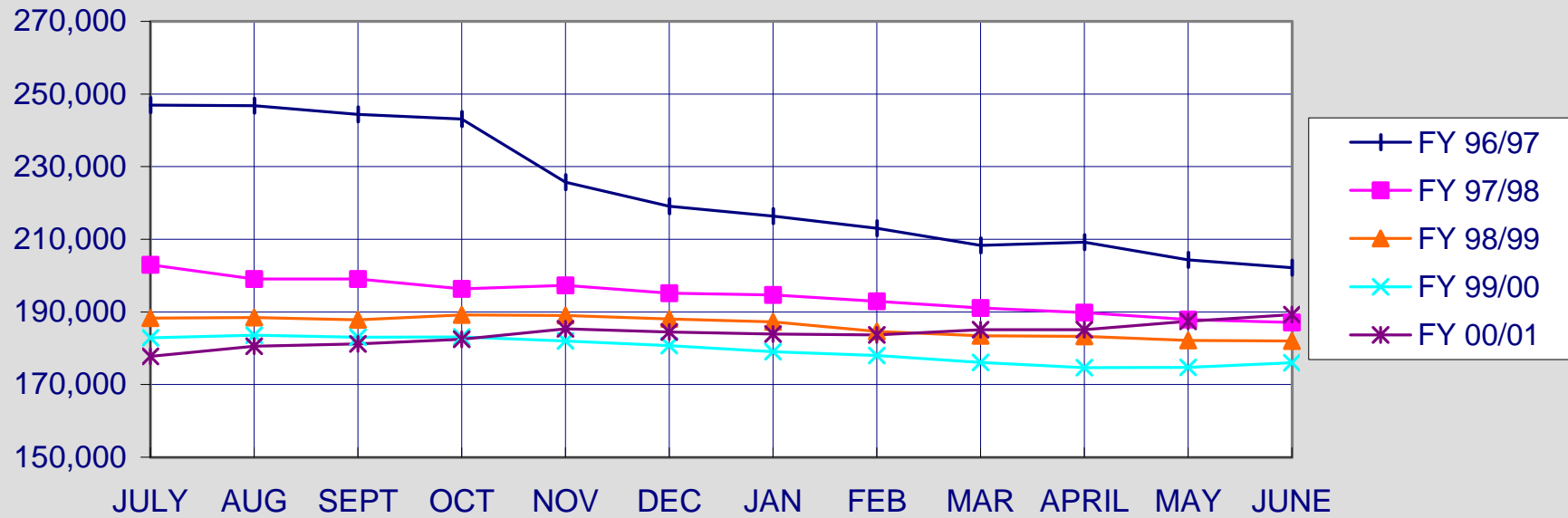

FOOD STAMP CASES BY FISCAL YEAR

STATEWIDE MONTHLY TOTALS

MONTH	FY 96/97	FY 97/98	FY 98/99	FY 99/00	FY 00/01
JULY	246,945	202,945	188,311	182,894	177,731
AUG	246,795	199,092	188,471	183,571	180,558
SEPT	244,386	199,039	187,801	183,061	181,196
OCT	243,137	196,321	189,184	183,117	182,493
NOV	225,679	197,330	189,010	182,011	185,317
DEC	219,099	195,191	188,025	180,735	184,455
JAN	216,410	194,645	187,247	179,071	183,879
FEB	212,997	192,946	184,601	178,020	183,690
MAR	208,325	191,052	183,392	176,127	185,099
APRIL	209,167	189,836	183,251	174,631	185,091
MAY	204,305	187,878	182,153	174,725	187,418
JUNE	202,159	187,115	182,018	176,013	189,264
Average	223,284	194,449	186,122	179,498	183,849
Totals	2,679,404	2,333,390	2,233,464	2,153,976	2,206,191

Food Stamp Cases By Fiscal Year Statewide Monthly Totals

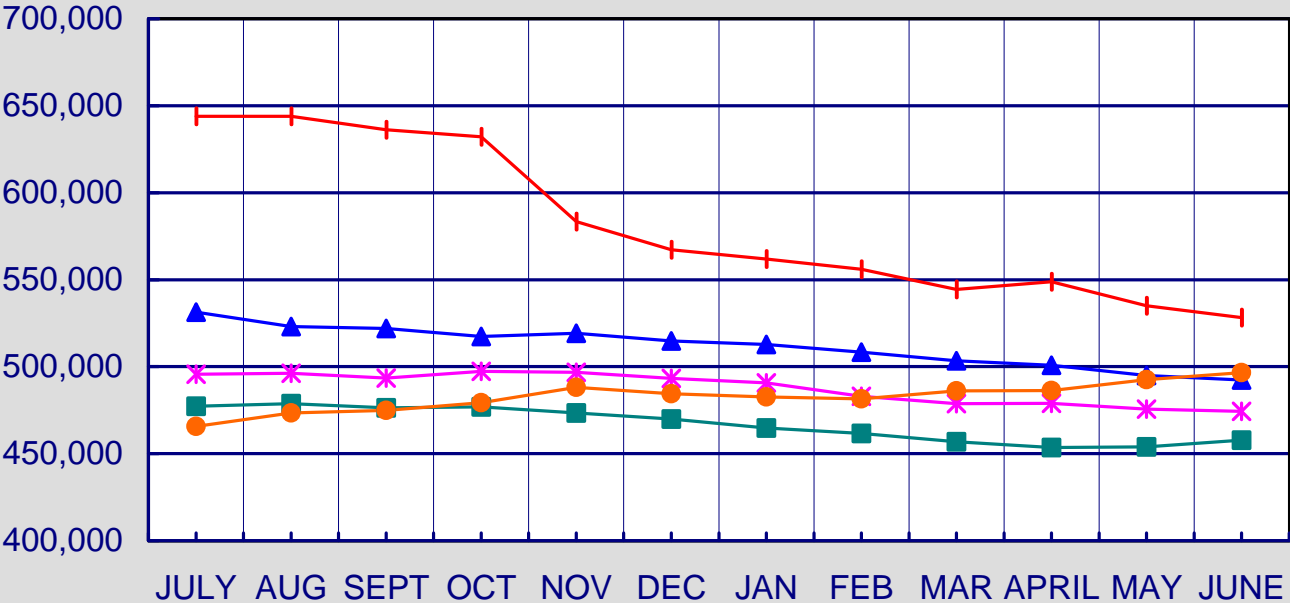


FOOD STAMP RECIPIENTS BY FISCAL YEAR

STATEWIDE MONTHLY TOTALS

MONTH	FY 96/97	FY 97/98	FY 98/99	FY 99/00	FY 00/01
JULY	643,914	531,310	495,630	477,178	465,733
AUG	643,815	522,982	496,225	478,648	473,404
SEPT	636,092	521,985	493,446	476,306	474,808
OCT	632,152	517,318	497,312	476,871	479,189
NOV	583,332	519,241	496,756	473,325	488,196
DEC	567,269	514,816	493,250	469,904	484,488
JAN	561,801	512,743	490,646	464,833	482,561
FEB	555,934	508,365	482,874	461,627	481,560
MAR	544,309	503,402	478,777	456,805	486,049
APRIL	548,823	500,743	478,959	453,529	486,229
MAY	534,994	494,822	475,571	453,860	492,584
JUNE	528,207	492,292	474,366	457,776	496,503
Average	581,720	511,668	487,818	466,722	482,609
Totals	6,980,642	6,140,019	5,853,812	5,600,662	5,791,304

**FOOD STAMP RECIPIENTS BY STATE FISCAL YEAR
STATEWIDE MONTHLY TOTALS**



- FY 96/97
- FY 97/98
- FY 98/99
- FY 99/00
- FY 00/01